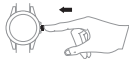


**Getting started**

Remove the plastic stopper (in the direction of the arrow).

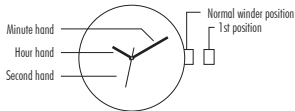


Press the winder.

**Instructions**

The watch must be serviced regularly in order for it to work correctly. The length of time between services will vary depending on the model, climate and the care you take of your watch. As a general rule, we recommend the following steps so that you can keep your watch in tip-top condition for as long as possible.

- Temperature: avoid temperatures below 0°C (30°F) or above 35°C (100°F).
- Avoid prolonged exposure to sun, steam, contact with alcohol, detergents, perfume or cosmetic products to prevent distortion, discoloration or any damaging reaction.
- Do not use any watch button while under water to prevent water from entering the mechanism.

**SETTING THE TIME**

1. Gently pull the winder out to the 1st position.
2. Turn the winder to set the hour and minute hands to the correct positions.
3. The second hand starts again when the winder is pushed back into its normal position.

**Solar Power**

Environment	Charging time to work for one day	Charging time for steady operation	Charging time if the battery is empty
Under direct sunlight Fine weather	2 min	15 min	5 hours
Under direct sunlight Cloudy weather	8 min	1,5 hours	20 hours
20cm under fluorescent lamp	25 min	4 hours	60 hours
Interior lighting	100 min	35 hours	/

**What will happen if the battery becomes low ?**

When the power reserve becomes low, the second hand moves every two seconds.

Please charge the watch by exposing the dial to light.

After the watch is charged, the second hand will move normally.